



**FF**  
Female/Female



**MF**  
Male/Female



**GUFS**



**MM**  
Male/Male



**BL**  
Male/Female



**Y**



**EYMF**

Class I, Div. 1 & 2, Groups C,D  
Class II, Div. 1 & 2, Groups E,F,G  
Class III



Listed - File E10514



Certified - File LR11716



File 25215



See files for details or call Killark.

## FEATURES-SPECIFICATIONS

### Applications

- Elbows: To change direction in rigid or IMC conduit systems
- Capped Elbows: To change direction 90° in rigid or IMC conduit systems where space is limited and access is needed for pulling conductors or maintenance
- Swivel Elbows: Allows conduit to be joined at angles ranging between 90° to 180°. A screwdriver is the only tool needed
- 90° Plugged Elbows: To change direction 90° in rigid or IMC conduit systems where space is limited and access is needed for pulling conductors or maintenance

### Features

- Threaded for rigid conduit or IMC
- Smooth integral bushings to prevent damage to wires

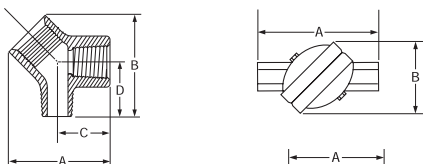
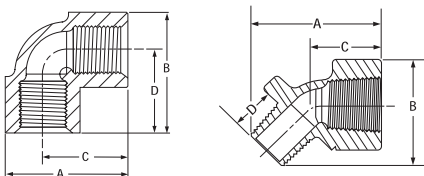
### Material/Finish

#### Copper-free Aluminum

(less than 4/10 of 1%)

- Electrostatically applied powder coating

**Iron** Zinc electro-plate



**KILLARK®**

ELBOWS							
CATALOG NUMBER		HUB SIZE	TYPE	A	B	C	D
ALUMINUM	IRON						
FF-90-1 <sup>①</sup>	FF-90-1M <sup>③</sup>	1/2"	FF	2"	2"	1-3/8"	1-3/8"
FF-90-2 <sup>①</sup>	FF-90-2M <sup>③</sup>	3/4"	90°	2-1/4"	2-1/4"	1-1/2"	1-1/2"
FF-90-3 <sup>①</sup>	FF-90-3M <sup>③</sup>	1"		2-15/16"	2-15/16"	2"	2"
FF-45-1 <sup>①</sup>	FF-45-1M <sup>③</sup>	1/2"		2-3/8"	2"	1-1/8"	—
FF-45-2 <sup>①</sup>	FF-45-2M <sup>③</sup>	3/4"	FF	2-11/16"	2-3/16"	1-1/4"	—
FF-45-3 <sup>①</sup>	FF-45-3M <sup>③</sup>	1"	45°	3-3/8"	2-11/16"	1-5/8"	—
FF-45-6 <sup>①</sup>	FF-45-6M <sup>③</sup>	2"		4-3/4"	3-7/8"	2-1/4"	—
MF-90-1 <sup>①</sup>	MF-90-1M <sup>③</sup>	1/2"	MF	11/16"	2"	1-3/8"	1-3/8"
MF-90-2 <sup>①</sup>	MF-90-2M <sup>③</sup>	3/4"	90°	7/8"	2-7/16"	1-1/2"	1-11/16"
MF-45-1 <sup>①</sup>	MF-45-1M <sup>③</sup>	1/2"	MF	2-1/8"	1-3/4"	1-1/8"	3/4"
MF-45-2 <sup>①</sup>	MF-45-2M <sup>③</sup>	3/4"	45°	2-3/8"	1-7/8"	1-9/32"	3/4"
MM-90-1 <sup>①</sup>	MM-90-1M <sup>③</sup>	1/2"	MM	2-1/16"	2-1/16"	1-3/8"	1-3/8"
MM-90-2 <sup>①</sup>	MM-90-2M <sup>③</sup>	3/4"	90°	2-1/4"	2-1/4"	1-1/2"	1-1/2"
BL-90-1 <sup>①</sup>	BL-90-1M <sup>③</sup>	1/2"	BL	2-1/4"	2-3/8"	1-7/8"	1-3/4"
BL-90-2 <sup>①</sup>	BL-90-2M <sup>③</sup>	3/4"	90°	2-5/8"	3"	2-1/8"	2-1/4"
BL-90-3 <sup>①</sup>	BL-90-3M <sup>③</sup>	1"		2-1/4"	3-7/16"	2-5/8"	2-1/2"

CAPPED ELBOWS							
CATALOG NUMBER		HUB SIZE	TYPE	A	B	C	D
ALUMINUM	IRON						
Y-1 <sup>①</sup>	Y-1M <sup>④</sup>	1/2"	90°	2-7/8"	2-3/4"	1-7/8"	—
Y-2 <sup>①</sup>	Y-2M <sup>④</sup>	3/4"	90°	3-1/16"	3-3/4"	2-1/8"	—
Y-3 <sup>①</sup>	Y-3M <sup>④</sup>	1"	90°	4"	3-1/4"	2-5/8"	—
Y-4 <sup>①</sup>	Y-4M <sup>④</sup>	1-1/4"	90°	5-1/16"	4-1/8"	3-7/8"	—
Y-5 <sup>①</sup>	Y-5M <sup>④</sup>	1-1/2"	90°	5-1/16"	4-1/4"	3-7/8"	—

SWIVEL ELBOWS							
CATALOG NUMBER		HUB SIZE	TYPE	A	B	C	D
ALUMINUM	IRON						
GUFS-1 <sup>②</sup>	GUFS-1M <sup>⑤</sup>	1/2"	180°	4-1/2"	2-1/4"	—	—
GUFS-2 <sup>②</sup>	GUFS-2M <sup>⑤</sup>	3/4"	180°	4-1/2"	2-1/4"	—	—
GUMFS-1 <sup>②</sup>	GUMFS-1M <sup>⑤</sup>	1/2"	180°	5-1/8"	2-1/4"	—	—
GUMFS-2 <sup>②</sup>	GUMFS-2M <sup>⑤</sup>	3/4"	180°	5-1/4"	2-1/4"	—	—

90° PLUGGED ELBOWS							
CATALOG NUMBER <sup>⑤</sup>		HUB SIZE	TYPE	A	B	C	D
ALUMINUM	IRON						
EYMF-1 <sup>②</sup>	—	1/2"	90°	2-5/8"	2-5/8"	1-3/8"	1-3/8"
EYMF-2 <sup>②</sup>	—	3/4"	90°	2-3/4"	2-3/4"	1-1/2"	1-1/2"

① Copper-free aluminum - Electrostatically applied powder coating

② Aluminum - Natural finish

③ Iron - Zinc electroplate

④ Iron - Duraloy finish

⑤ Furnished with 1" close-up plug in top.